

# Expedition Project “Arctic Floating University-2018: Terraе Novae”



**Dates:** July 10-29, 2018

**Duration:** 20 days

**Organizers:** Northern (Arctic) Federal University named after M.V. Lomonosov, ROSHYDROMET.

**Route:** Arkhangelsk – Solovetsky Islands – Russkaya Gavan' (Novaya Zemlya) – Malye Oranskiye Islands – Cape Zhelaniya – Murmantsa Bay (Gemskerk Island) – Ledyanaya Gavan' – Varnek (Vaigach Island) – Matveev Island – Cape Menshikov – Propashchaya Bay – Bugrino (Kolguyev Island) – Arkhangelsk.

I - IV -hydrological sections

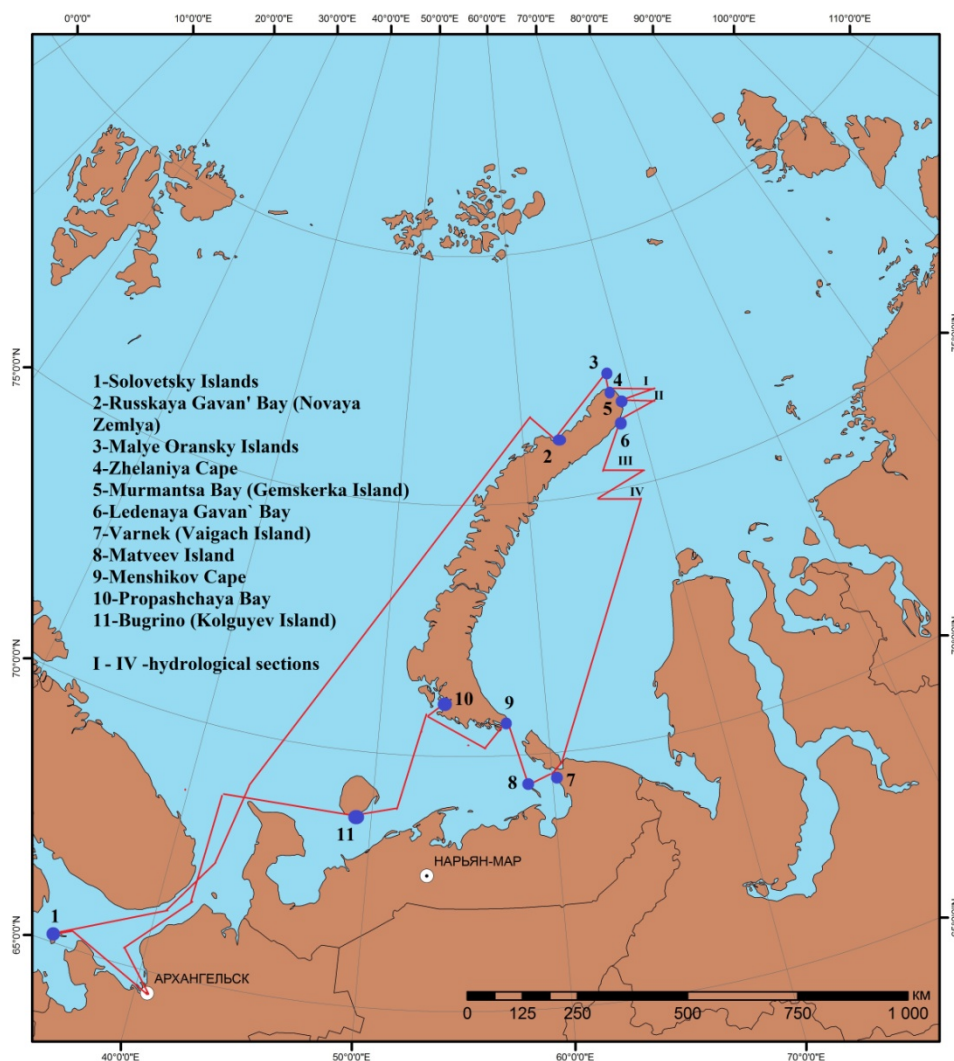
**Expected Number of Participants:** 58 (students, post-graduate students, research fellows from Russian and foreign scientific and educational institutions).

## Partners:

Russian Geographical Society, Russian Arctic National Park, Lomonosov Moscow State University, University of Geneva, University of Lausanne, Federal Polytechnic School of Lausanne.

## Expedition Aims:

- *acquiring new knowledge about the state and changes in the ecosystem of the coastal areas of Novaya Zemlya archipelago;*
- *training of young specialists in the Arctic-focused specialties: hydrometeorology, ecology, arctic biology, geography, ethnopolitology, international law etc.;*
- *development of scientific and educational cooperation with the Arctic Council countries in the framework of high-latitude Arctic expeditions;*
- *promotion of the Russian scientific, historical, cultural and natural heritage and polar specialties, promotion of the Russian Arctic concept at the national and international level.*



## RESEARCH PROGRAM:

- ✓ assessment of man-made pollution of the local island territories for the purpose of accumulated environmental damage elimination;
- ✓ study of the species diversity in the Novaya Zemlya archipelago and adjacent waters in the context of climate change;
- ✓ study of hydrological regimes of the Barents and Kara Seas;
- ✓ study of the historical and cultural heritage of the Russian Arctic National Park for tourism development and educational activities;
- ✓ integrated monitoring of changes in the vegetation cover of the Arctic tundra transition zones in the context of climate change;
- ✓ study of adaptive mechanisms of the human organism to the conditions of the Arctic.

## EDUCATIONAL PROGRAM:

- ✓ providing interdisciplinary knowledge about the Arctic through direct introduction to the natural, historical and cultural heritage of the Russian Arctic.

## EDUCATIONAL MODULES:

- Arctic climate;
- Arctic hydrometeorology;
- Study of Arctic biodiversity and Arctic and Subarctic regions of the European North of Russia;
- Oceanology of the Arctic seas;
- Cryogenic processes and modern changes of the Arctic Ocean ice sheet;
- Arctic seas and coastal areas ecology;
- History of the Arctic region;
- Arctic in the system of international relations;
- Arctic legal framework.

The expedition will be followed by a conference for students and young researchers and the release of a collection of research-based articles.

## FUNDING

The project is co-funded by the participating organizations.

**Participation fee (*per person*): 330 thousand rubles.**

The fee covers accommodation and meals onboard, transport expenditures and administrative costs during the expedition. **Please note that the price does not include visa related costs.**

## DEADLINE FOR APPLICATION

**February 15, 2018**

Please submit your application via email to [vezhlivceva.k.v@edu.narfu.ru](mailto:vezhlivceva.k.v@edu.narfu.ru)

## CONTACT PERSON:

Ksenia Vezhlivetseva,  
Assistant Project Leader, NArFU  
Email: [vezhlivceva.k.v@edu.narfu.ru](mailto:vezhlivceva.k.v@edu.narfu.ru);  
Tel.: +7-962-663-54-10